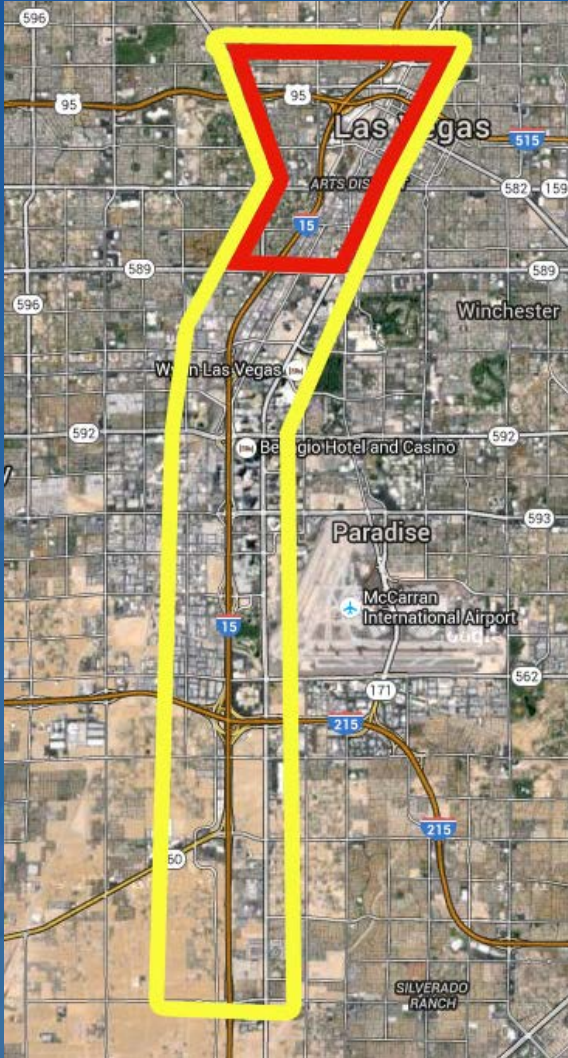


# Project Neon Update

July 12, 2017



# Project Area



- Main Focus: I-15 Sahara Ave to Spaghetti Bowl
- I-15 HOV Conversion to Silverado Ranch



## THE NEED

- ▶ Busiest stretch of roadway in Nevada
- ▶ 300,000 vehicles per day
- ▶ 25,000 lane changes per hr
- ▶ 3 crashes each day



# Project Elements

- **New** I-15/Charleston Interchange
- Southbound I-15 Ramp Braiding
- **New** Connections and Downtown Access
- HOV Flyover Bridge
- HOV Interchange - **Neon Gateway**
- Landscape & Aesthetics

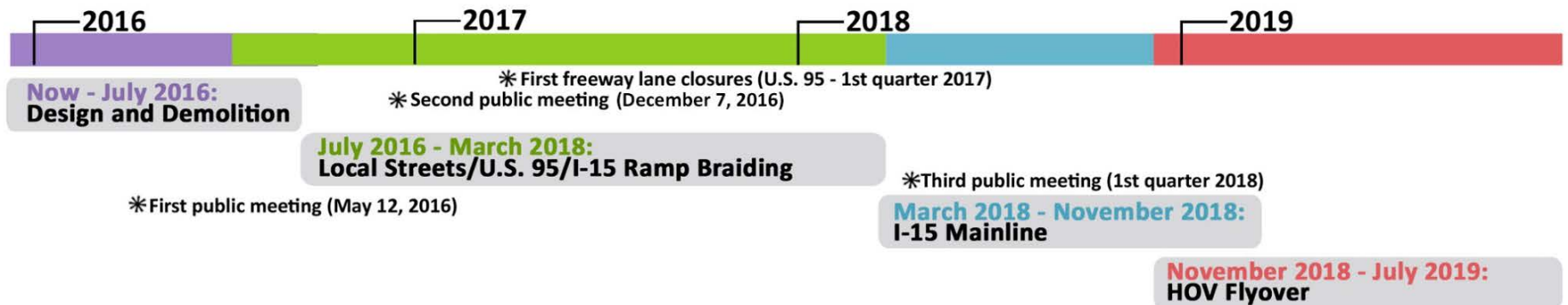


# Project Elements





# Project Schedule



# Project Team

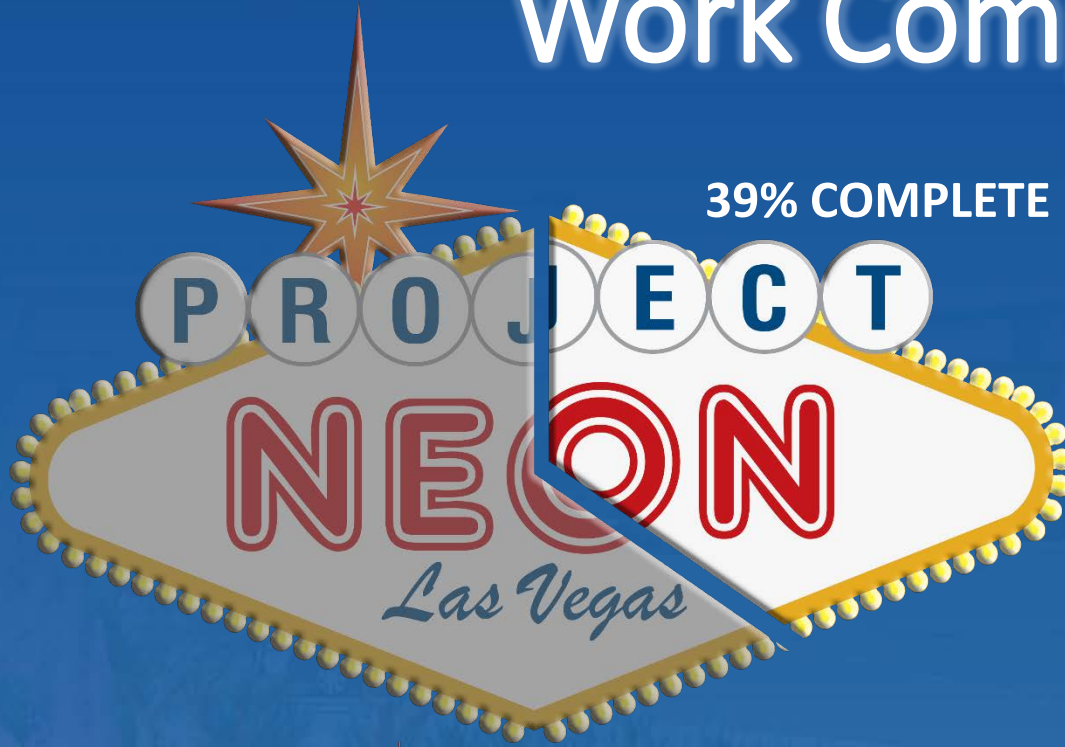






**PROGRESS**

# Work Complete



Total Contract Amount  
\$571M

Spent to Date  
\$221M



DESIGN



CONSTRUCTION



# Aerial of Work near I-15





# Aerial of Work near I-15



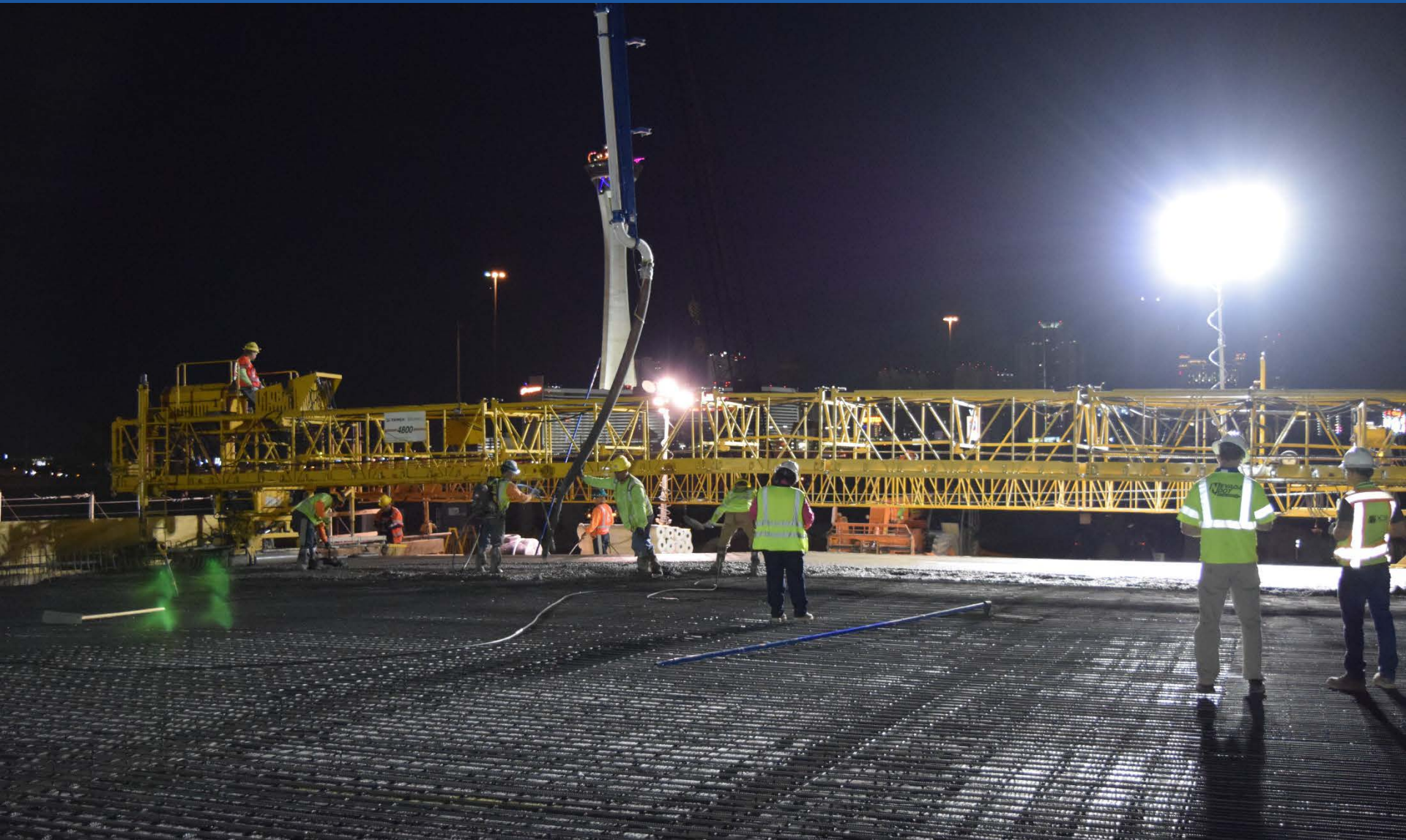


# Aerial of US 95 at MLK Blvd





# Bridge Deck Pour





# MSE Wall



# Construction Facts

Total Earthwork	1 million cubic yards	324 Olympic swimming pools
Drainage Pipe	8 miles	451 basketball courts end to end
Bridge Concrete	42,062 cubic yards	Sidewalk from Las Vegas to St. George, UT
Retaining Walls/ Bridge Abutments	14 acres	10.5 football fields
Concrete Paving	247,812 square yards	Bike path from Boulder City to Kingman, AZ
Reinforcing Steel	15 million pounds	256 Sherman tanks

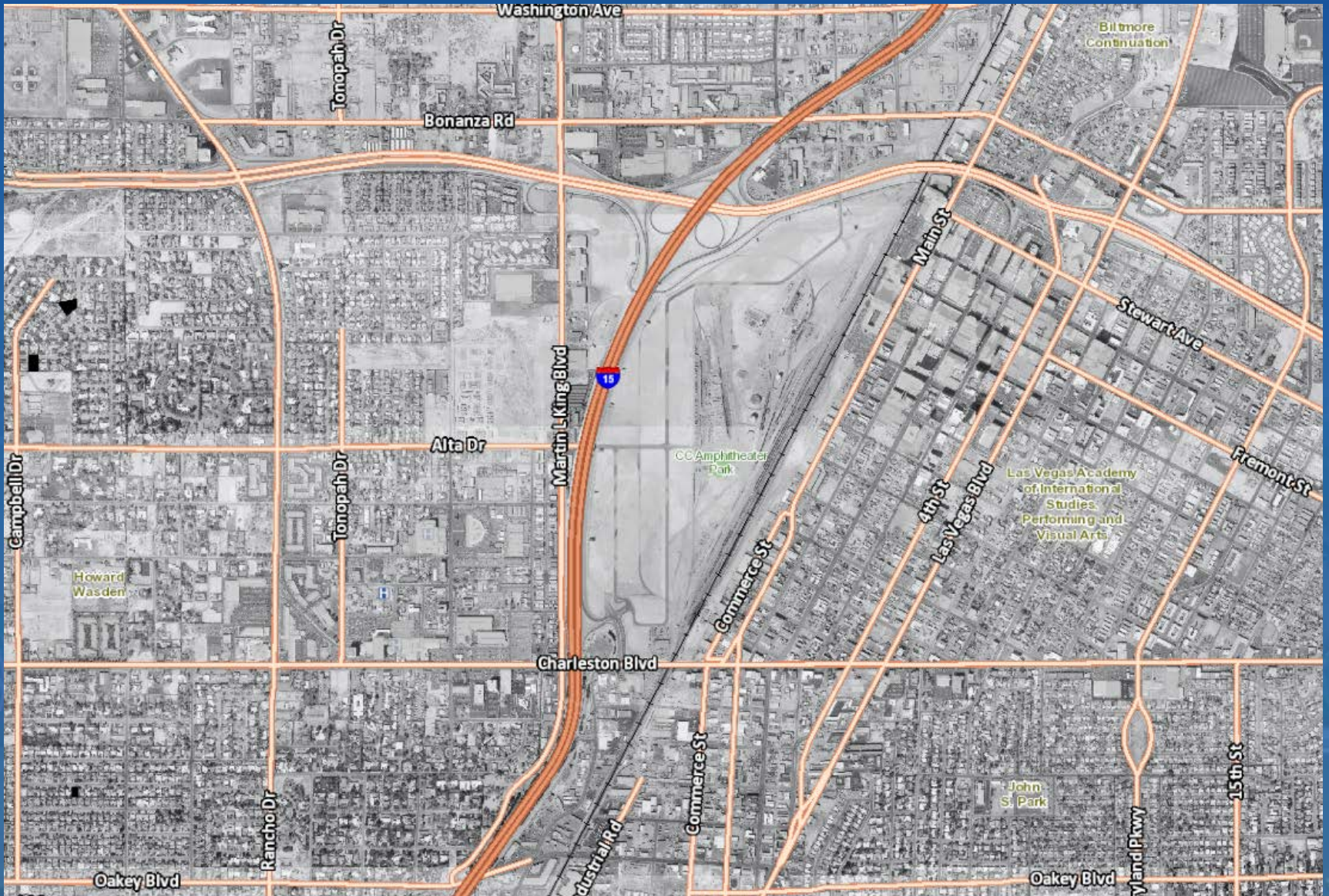




# ENVIRONMENTAL OVERSIGHT

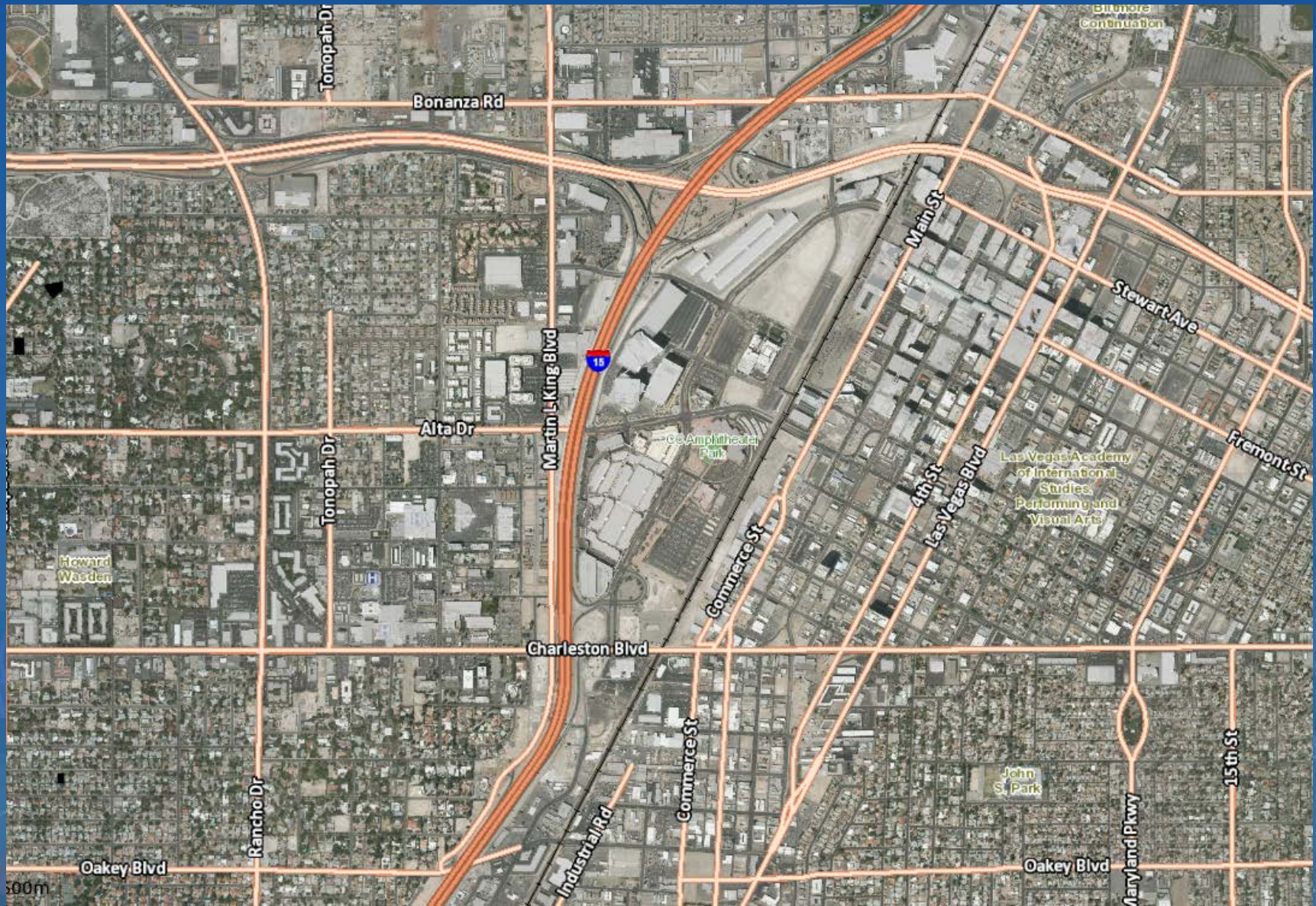


# Project Site - 1990



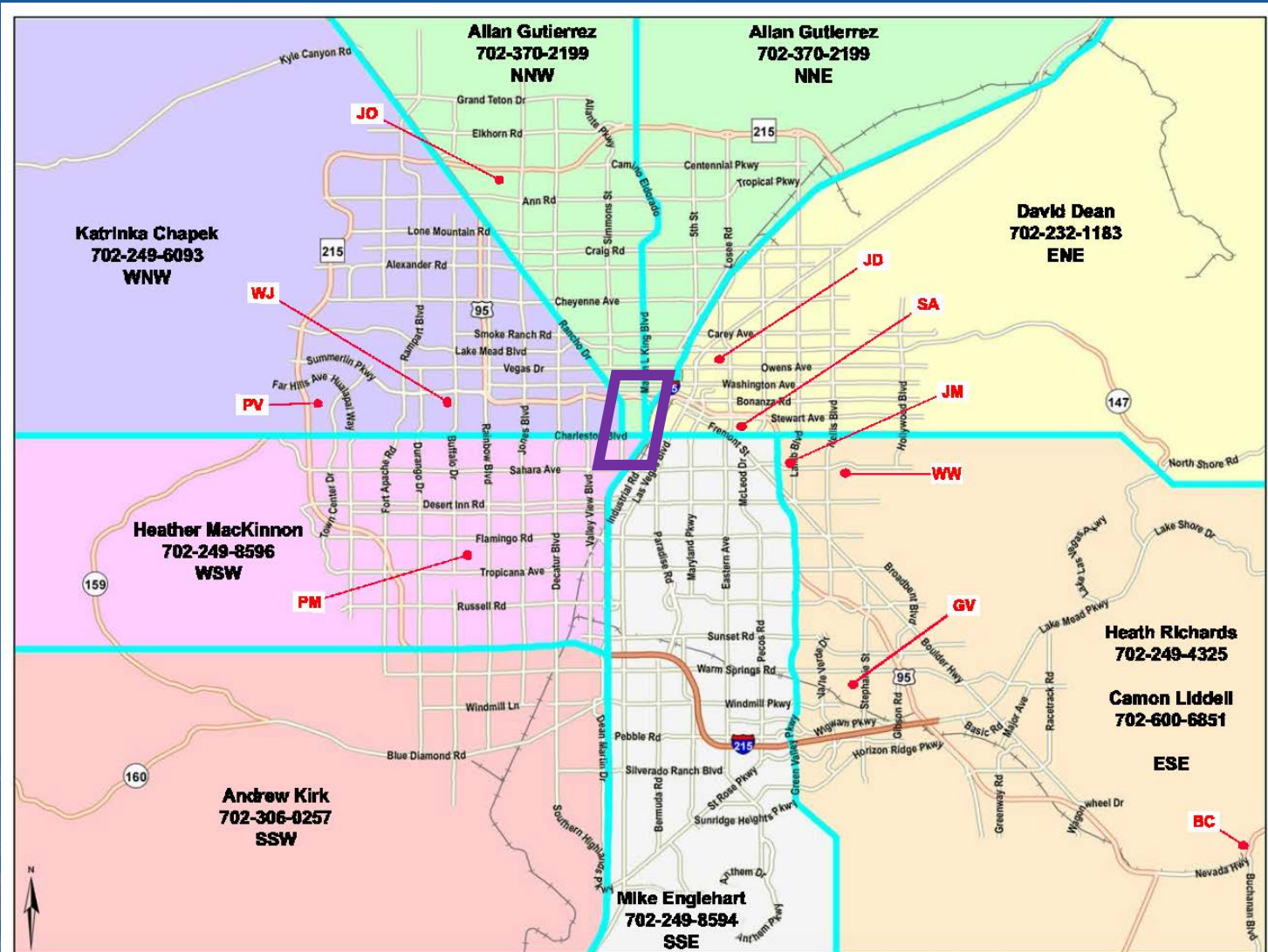


# Project Site - 2016





# Clark County Department of Air Quality





# Dust Mitigation



# HazMat Removal



## Asbestos Abatement

- ✓ 153,859 sf of wall/ceiling surfacing material
- ✓ 45,282 sf of spray on acoustic ceiling material
- ✓ 1,474 sf sheet flooring
- ✓ 60 sf tile adhesive
- ✓ 43 sf HVAC flex connector
- ✓ 140 sf window putty
- ✓ 1,650 sf pool liner skim coat
- ✓ 165 sf roofing felt/mastic





# HazMat Removal

## Potential Hazardous Waste

- ✓ 4,291 fluorescent lamps and CFL
- ✓ 895 ballasts
- ✓ 157 HVAC units refrigerant removed
- ✓ 207 smoke detectors
- ✓ 57 mercury thermostats/switches
- ✓ 56 high intensity discharge lights





# HazMat Removal





# Stormwater Oversight



NEVADA DIVISION OF  
**ENVIRONMENTAL  
PROTECTION**

CITY OF  
*Las Vegas*





# Stormwater Mitigation

- ✓ NDEP is statutory authority for water quality
- ✓ Total area of site disturbed = approximately 250 acres
- ✓ Receiving Waters – CLV Storm Drain – Las Vegas Wash





# Flood Control

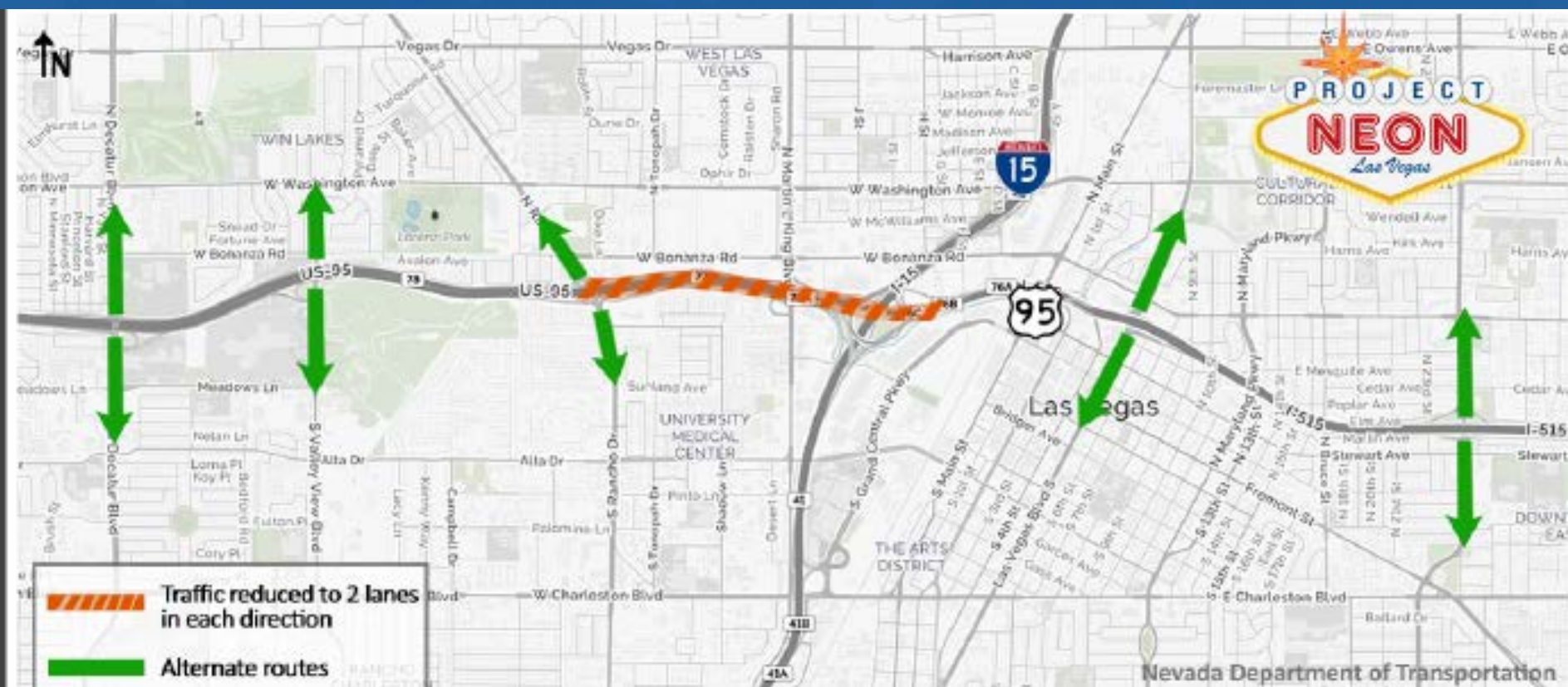




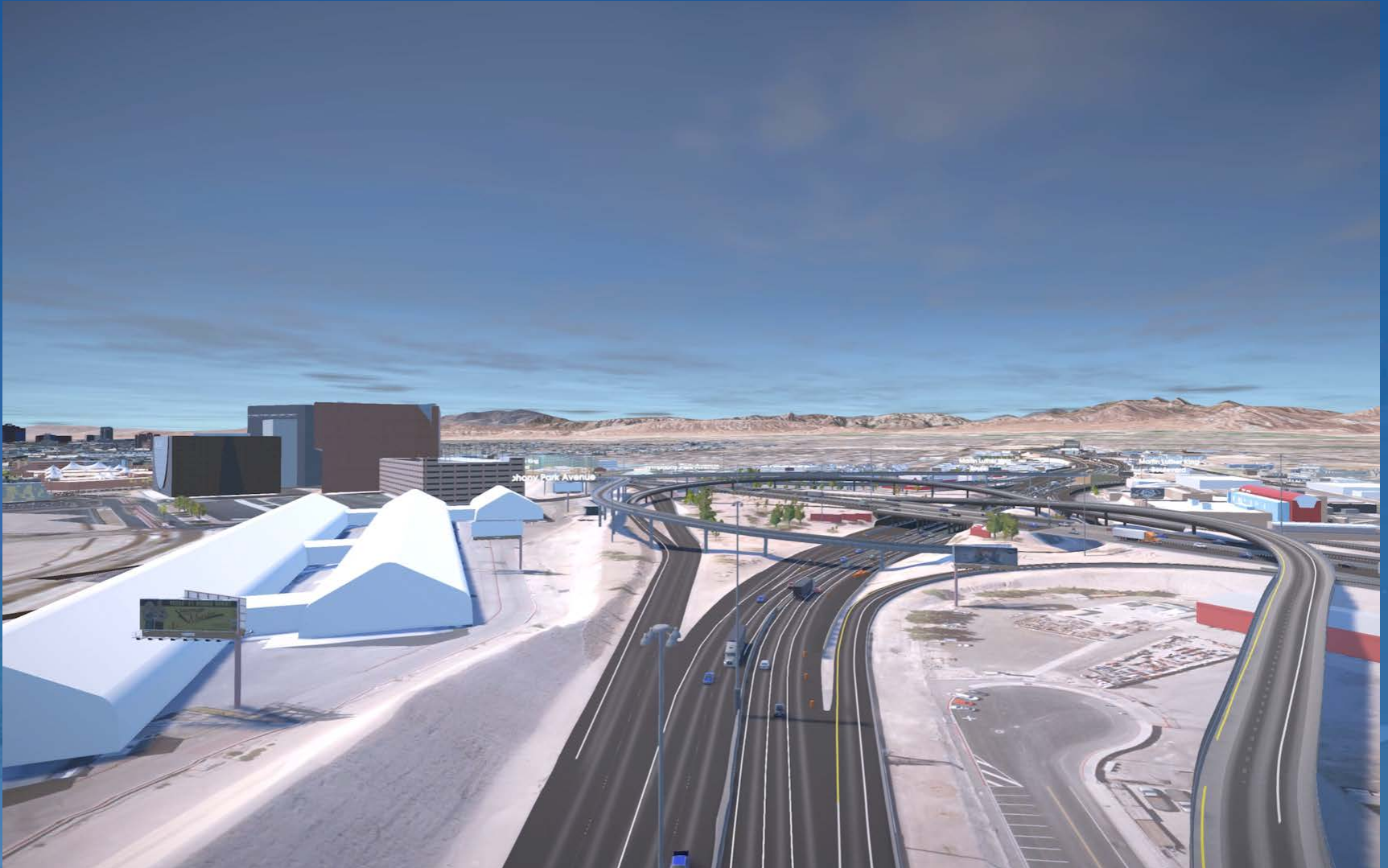


# 2017 TRAFFIC IMPACTS

# THE BIG SQUEEZE











# ZIPPER MERGE

*Take turns, move faster*

## HOW IT WORKS



Signs will alert you that a ZIPPER MERGE is ahead.

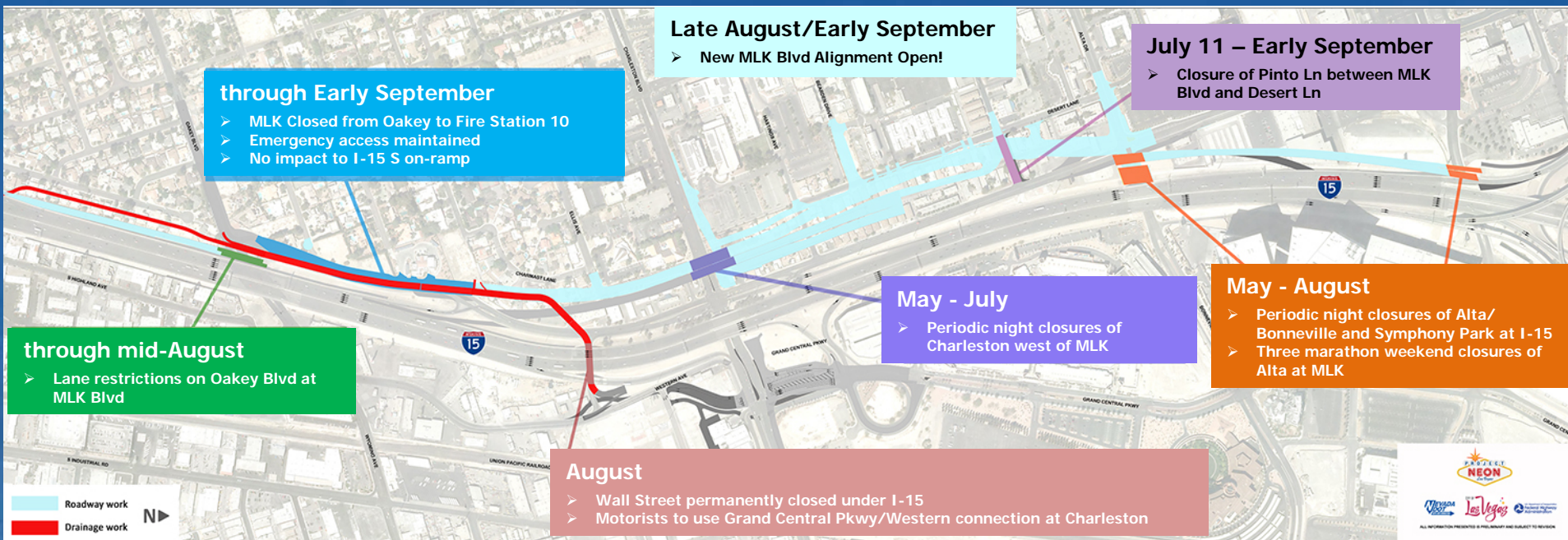


Stay in your lane until the merge point.



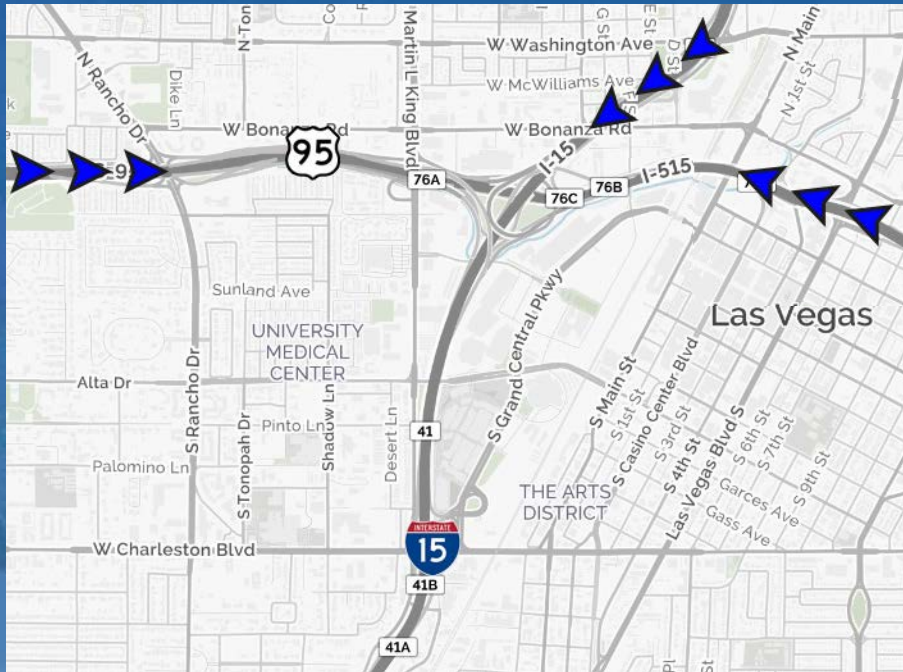
At the "merge now" sign, take turns to safely and smoothly merge all cars into one lane.

# Local Streets





# Active Traffic Management (ATM) Construction



# Active Traffic Management (ATM) Construction





# Major Traffic Impacts



Coming soon....

Impacts to I-15 in 2018



# COMMUNICATION



# Communication



Use Waze!

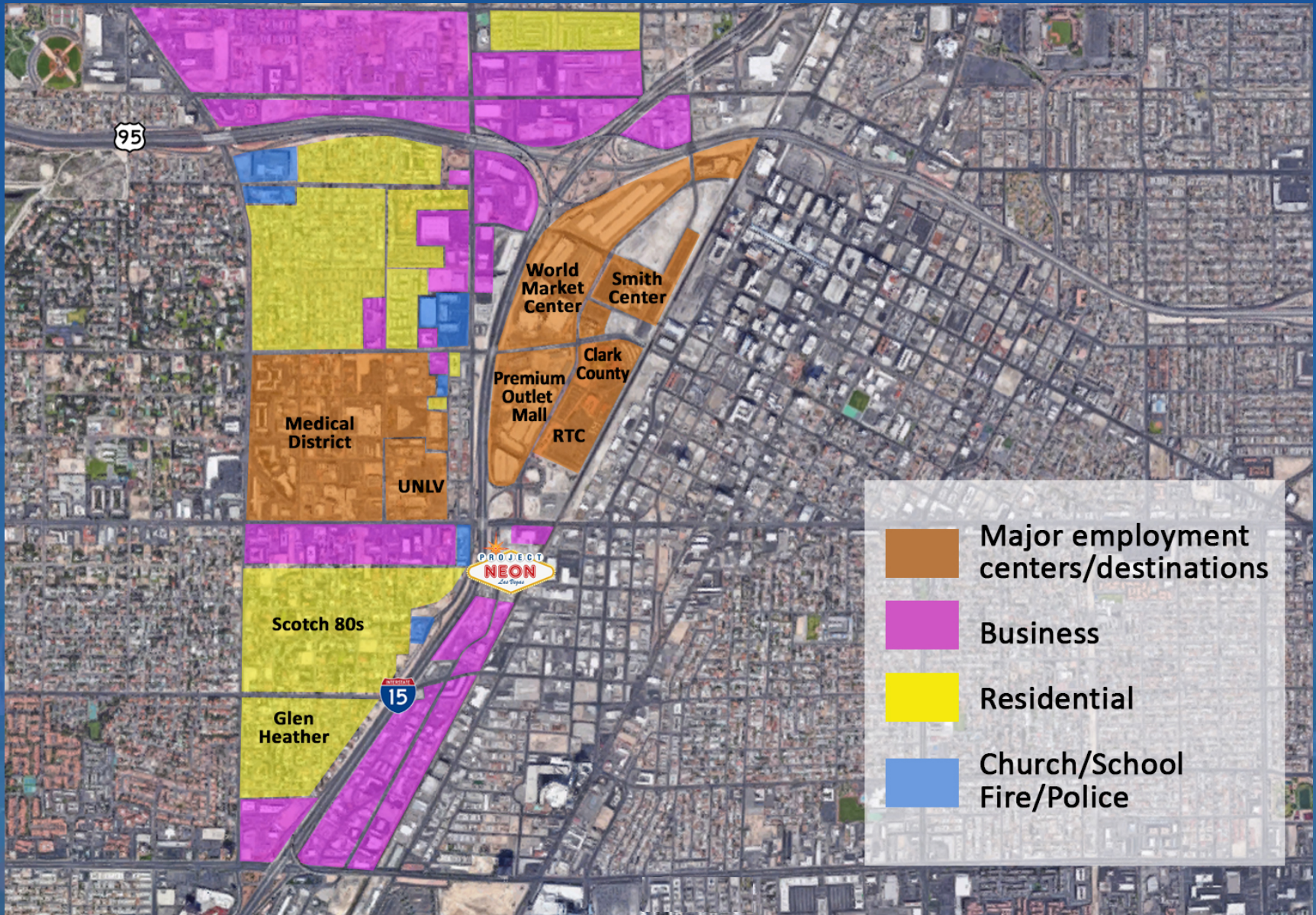


waze

OUTSMARTING TRAFFIC, TOGETHER



# Stakeholders



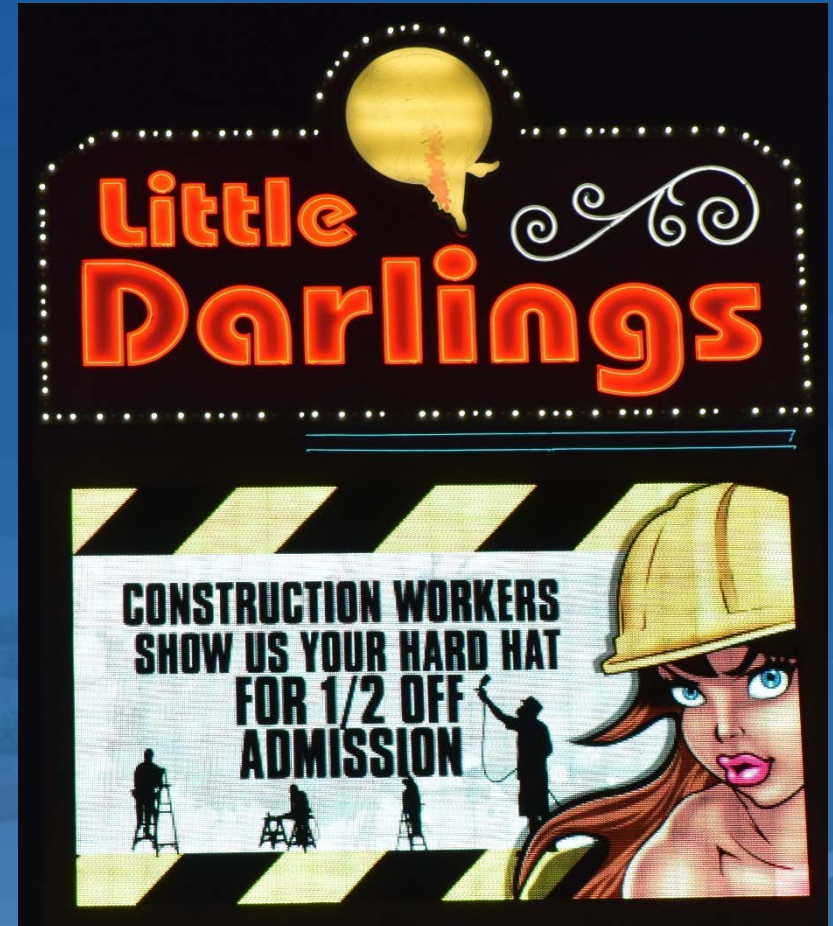
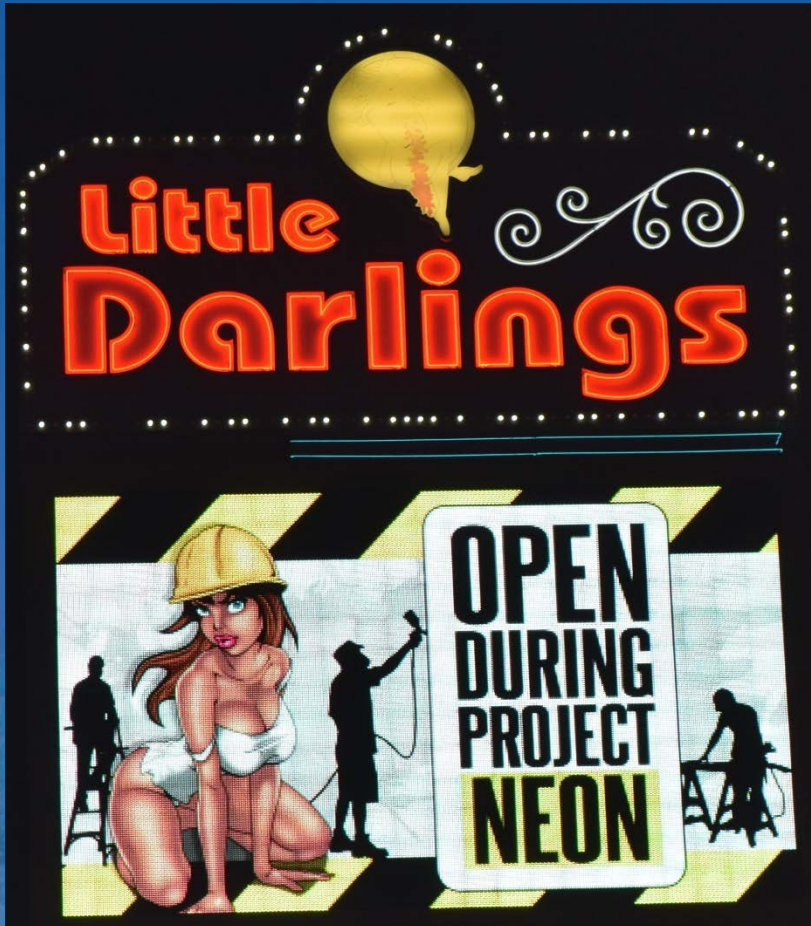


# Stakeholder Participation





# Stakeholder Participation





# Public Outreach Office



320 Wall Street  
Las Vegas, NV 89102

Office Hours: M-F 9am to 6pm  
Saturday: By appointment  
Closed Sundays and Holidays

Hotline: (702) 293-NEON (6366)



# Questions?



**Dale Keller, P.E.**

NDOT PROJECT MANAGER

[dkeller@dot.nv.gov](mailto:dkeller@dot.nv.gov)