

## ABOUT US:

The Air & Waste Management Association (A&WMA) is a nonprofit, nonpartisan professional organization that offers individuals a wide array of resources and benefits embodied within the technical and scientific environmental community. Membership benefits include the opportunity for professional development, information exchange, networking opportunities, and public education and outreach. By helping to promote global environmental responsibility, A&WMA hopes to increase the effectiveness of organizations and individuals to make critical decisions that benefit their surrounding communities. These benefits are currently extended to over 8,000 environmental professionals in 65 countries. In 2007 A&WMA celebrated its 100th year of providing service to environmental professionals.

For more information and to see how the A&WMA can benefit you, please visit the national website at <http://awma.org>.



Visit the Nevada Section Facebook® page or our newly designed website at <http://nvawma.org> for the most up-to-date info on speakers, webinars, and special events.

## INSIDE THIS ISSUE:

Upcoming Luncheon Speaker Calendar	2
Past Speaker Highlights	2
EnergyFit Nevada	3



AIR & WASTE MANAGEMENT  
ASSOCIATION

## Nevada Section

VOLUME 51

FALL 2014

## News from the Nevada Section Board of Directors



By: Jason Hoffman, Media Director

For what it's worth in southern Nevada, fall is finally here! In preparation for the arrival of sub-100 degree temperatures we have lined up a great series of speakers, field trips, and special events to finish up 2014. Watch your inbox and our web-site for your invitations and full details of the Nevada Section's fall activities.

The Fall Newsletter focuses on a great presentation that we had from UNLV professor Dr. Brenda Buck regarding naturally occurring asbestos in southern Nevada. Nearly 80 attendees showed up for the luncheon and presentation, making it our most successful event in recent history. Check out page 2 for a summary of the presentation and links to all of Dr. Buck's research, which is ongoing.

Also, one of our members utilized EnergyFit Nevada's home assessment service to evaluate their home's energy usage and to find out ways to mitigate energy waste. They have graciously agreed to share their report with the Nevada Section. Check out page 3 for more information.

## Nevada Section 2014/2015 Board of Directors

Chairman: Shawna DeSart  
[Shawna.DeSart@gesnevada.com](mailto:Shawna.DeSart@gesnevada.com)  
Vice-Chairman: Brian Loffman  
[Brian.Loffman@stantec.com](mailto:Brian.Loffman@stantec.com)  
Secretary: Mel Zeldin  
[mzeldin45@gmail.com](mailto:mzeldin45@gmail.com)  
Treasurer: Adrienne Watkins  
[arwatkins@terracon.com](mailto:arwatkins@terracon.com)  
Programming Director: Paul Fransioli  
[Paul.Fransioli@ClarkCountyNV.gov](mailto:Paul.Fransioli@ClarkCountyNV.gov)



Media Director: Jason Hoffman  
[jhoffman@broadbentinc.com](mailto:jhoffman@broadbentinc.com)  
Membership Director: Ryan Jones  
[rjones@broadbentinc.com](mailto:rjones@broadbentinc.com)  
Student Ambassador: Savannah Speer  
[sspeer@broadbentinc.com](mailto:sspeer@broadbentinc.com)  
ESC Representative: Genine Wright  
[GCWright@washoecounty.us](mailto:GCWright@washoecounty.us)  
Chair Emeritus: Sarah Hoffman  
[sarah.hoffman@hdrinc.com](mailto:sarah.hoffman@hdrinc.com)

Monthly luncheon meetings are held on the second Wednesday of every month. Luncheons are held at Cili Restaurant at 5160 Las Vegas Boulevard South, Las Vegas, NV 89119.

Check-in: 11:15 a.m. to 11:30 a.m.

Lunch Begins: 11:45 a.m.

Cost:

Members: \$25.00

Non-Members: \$30.00

Non-RSVP Walk-ins: \$35.00

Full Time Students: \$10.00

- No dress code restrictions
- Free self parking is available
- Great food, including a unique vegetarian option

To RSVP please contact Brian Loffman no later than noon on Monday the week of the luncheon. Brian.Loffman@stantec.com

Interested in being a sponsor for a future luncheon? Becoming a \$150 sponsor allows you to:

- Prominently display a poster, sign or banner at the sponsored luncheon
- Present your company and its services before the luncheon speaker's presentation
- Provide luncheon attendees with business cards, pens, information packets, etc.
- Display your company's logo on the Section's website and here in the newsletter

Promote your business by becoming a sponsor today! Contact any Board member for more information.

Would you like to be a speaker at a future A&WMA Luncheon? We would love to have you! Please contact board member Paul Fransioli with any ideas or suggestions.

Paul.Fransioli@ClarkCountyNV.gov

Most speakers make their slide shows available to the A&WMA community after their presentation. For more information on any past topic, please visit:

<http://www.nvawma.org>

## Upcoming Luncheon Speaker Calendar

Sponsored By:

October 8, 2014



Zane Marshall, Director of Water and Environmental Resources, SNWA

Mr. Marshall will be discussing regional water resources, conservation programs, the drought, and projects such as the third straw to Lake Mead.



ASSET LABORATORIES

November 12, 2014



Sherri McMahon, Environmental Officer, City of Las Vegas

Ms. McMahon will present, "Fats, Oils, Grease, Food Waste, and Solar Power for Energy at the City of Las Vegas Wastewater Treatment Plant".



December 10, 2014



Rory Reid, Politician and Attorney, Lionel Sawyer & Collins

Topic TBD



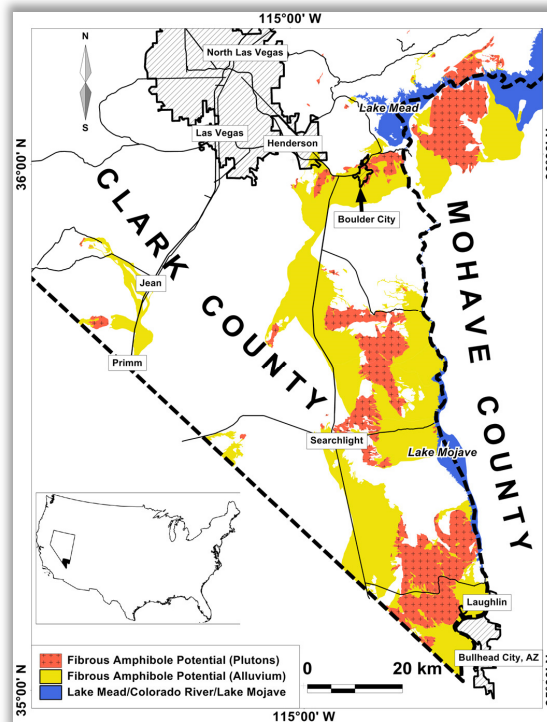
## Past Speaker Highlight

July, 2014

Dr. Brenda Buck

UNLV Professor, Department of Geoscience

Naturally occurring asbestos has been found in soils in southern Nevada, produced via the weathering of granite. Dr. Buck and her colleagues have been leading the way for this research, conducting sampling at various locations in the area. At one location in Boulder City, Nevada, a bypass is being constructed as a result of the Interstate 11 project connecting Las Vegas to Phoenix. Soil samples collected in this area have been found to contain asbestos, which has delayed the bypass project. Research regarding the potential for human exposure is continuing, including air sampling and epidemiological studies.



For more information regarding Dr. Buck's research, please visit the research team's website at <http://www.unlv.edu/sciences/research/natural-asbestos>.

The Agency for Toxic Substances and Disease Registry (ATSDR) has put together a great two-page learning tool called *Limiting Environmental Exposure to Asbestos in Areas with Naturally Occurring Asbestos*. The tool lists common examples of how you may be exposed to asbestos and provides tips for how you can reduce exposure to asbestos when living or recreating in these areas. <http://www.unlv.edu/sites/default/files/50/Sciences-AsbestosResearch-LimitingExposure.pdf>



In March 2014, EnergyFit Nevada, a local non-profit, spoke at the Nevada Section luncheon about their home energy assessments. EnergyFit's home assessments help educate homeowners on their home's energy usage and offer ways for homeowners to save on energy costs. The average EnergyFit home saves 30% on energy use, with the average homeowner saving \$950 per year. After the luncheon, one of our members utilized Energy Fit's home assessment and wanted to share the results with the rest of the Nevada Section. Visit our *News and Events* section of the Nevada Section webpage at [www.nvawma.org](http://www.nvawma.org) to read the full report!

If you are interested in having a home assessment conducted, rates start at \$399. Visit the EnergyFit Nevada website at [www.energyfitnevada.org](http://www.energyfitnevada.org) to schedule your appointment.

**HOME ENERGY ASSESSMENT**

6/28/2014

**PREPARED FOR:**  
260 West Country Club  
Henderson, NV 89015

**PREPARED BY:**  
Tyler Bryce on behalf of  
702-997-6514  
tyler@energyfitnevada.org

**YOUR ATTIC AND CEILING INSULATION**

As discussed before, by performing the blown cellulose on your home years ago offered a relatively high R-value for your home at the time of the audit and offered some effective air sealing as well. There are gaps in some lowered areas of the ceiling and a lack of proper installation of fiberglass batt insulation along the knee walls. Adding approximately 7-8 more inches of cellulose would bring the home to almost the max recommended R-value for homes (R-60).

ATTIC:	ACTION:	SAVE:
Current Insulation: Depth: 10.0 in. R Value: Nominal: 37 Effective: 34.9	Add: Depth: 8.9 in. R Value: Nominal: 19 Effective: 24.7	An estimated 3% of your energy use each year.

**AIR QUALITY AND SAFETY**

A recent EPA study showed that the average American home has worse air quality than our most polluted cities, and the air quality in homes is the fifth worst environmental problem in our country. Home air can include chemical contaminants, mold, bacteria, viruses, and gases leading to a variety of health issues.

**Ventilation**

Here your home's air leakage is shown after running a blower door test. Too much air leakage compromises the comfort and efficiency of your home – too little may require the introduction of mechanical ventilation to ensure good air quality.

**Combustion Safety**

If your home has combustion appliances (such as a gas, oil, or propane fired furnace, boiler, hot water heater, or oven), they may have been tested to ensure their exhaust does not pose a serious health and safety issue. Carbon monoxide detectors are highly recommended near these appliances.

**Other Air Quality Concerns**

Eliminating undesirable air infiltration from attics, crawl spaces, and garages will improve the air quality in your home. Air-sealing these spaces, and any HVAC ducts within them, will reduce the introduction of potentially harmful contaminants.

Your assessor or contractor will point out any specific areas of concern related to your home. For your certified safety, combustion appliances should be routinely inspected by a qualified mechanical contractor for function, adequate combustion air, draft, and carbon monoxide output.

**Air Leakage/Mechanical Ventilation**

Energy efficiency is more than just saving money on energy bills. It is about protecting human health, increasing comfort, and preventing damage to your home. Older homes often allow in unconditioned air (infiltration) that contains moisture, odors, and particulate pollutants, infiltration contributes to drafts, uncomfortable temperatures, and high humidity levels. The air leakage in the home was approximately 1832 CFM at 50 Pascals. With such a low leakage the home is recommended to have mechanical ventilation installed to improve the air quality in the home by allowing it to exchange air with the outside often enough as recommended by ASHRAE standards. Recommended mechanical ventilation would rate the current home's airtightness to approximately 2850 CHM30.

INFILTRATION:	ACTION:	SAVE:
Current Leakage: 0.0003 air/SqFt Current ACH50: 1.5		

Modeled Home vs Usage

